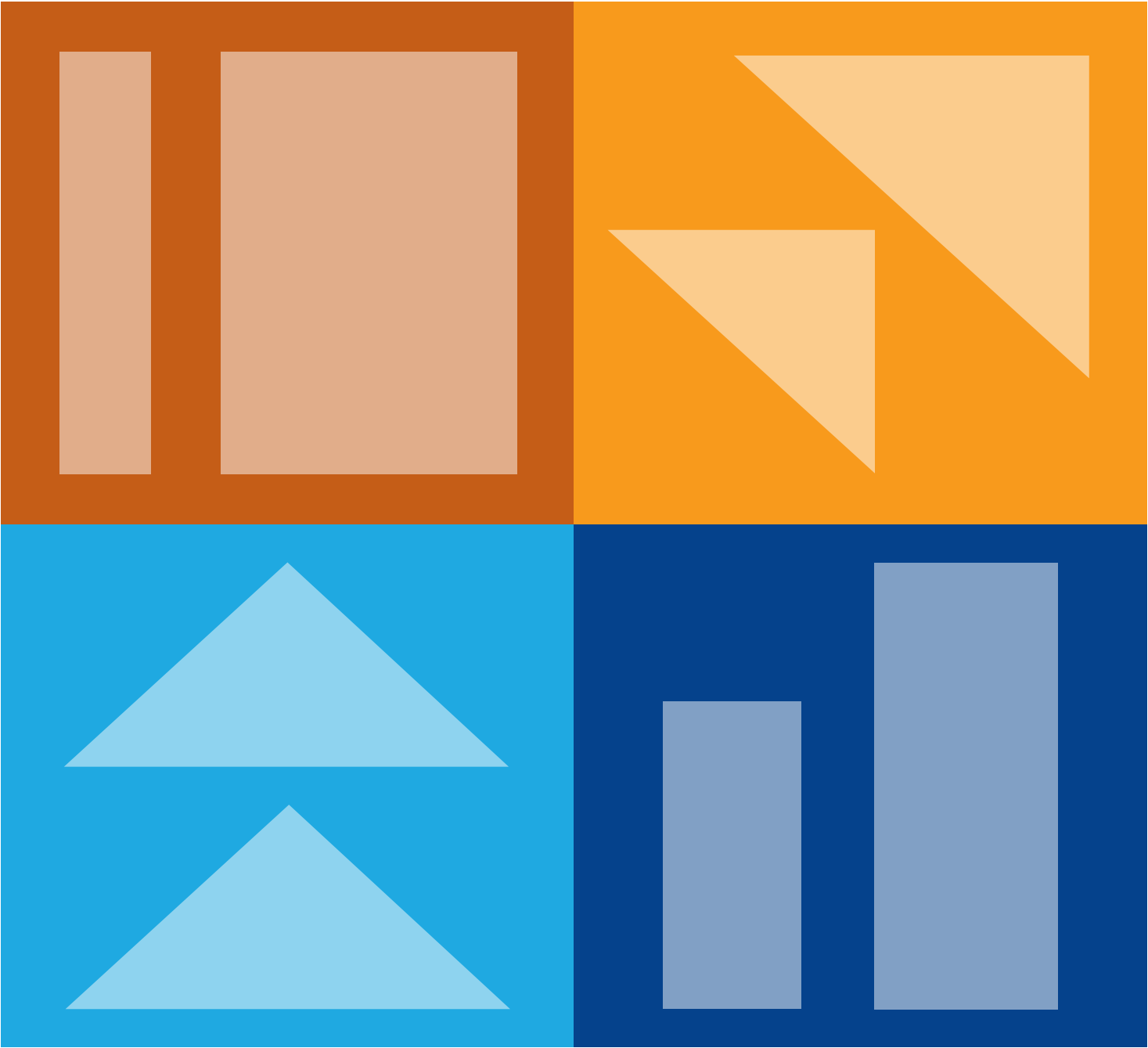


LEARNING, LEADING, LIVING

THE IMPACT OF PHILANTHROPY 2022





THE IMPACT OF PHILANTHROPY 2022 IS THE ANNUAL REPORT OF THE EMPIRE STATE COLLEGE FOUNDATION.

Thanks to the generous support of our alumni, friends, and employees, the Empire State College Foundation provides funding for student programs and collegewide initiatives throughout the year. These funds – in the form of scholarships, basic needs emergency funding, academic program support, faculty development, and other student programming – contribute to the growth of SUNY Empire students as they complete their education, and to the leadership of faculty as they deepen their professional expertise. Thanks to your gifts, our students and faculty are working together to ensure students live their best lives and achieve their dreams.

With your help, they are Learning, Leading, and Living.

A MESSAGE FROM

EMPIRE STATE COLLEGE FOUNDATION BOARD CHAIRWOMAN

MARIAN CONWAY, PH.D. '01, '04

Thank you! Because of your support in 2022 – from alumni, employees, and friends – we were able to provide students with basic needs emergency funding, activities and learning initiatives, academic programs, and, of course, scholarships.

Among the poignant student stories included in this year's report is one from a student who received the Joseph L. Mancino '80 Scholarship. I knew Joe well, he was not just a boss, he was a mentor. A thoughtful, generous man, Joe was encouraging twenty years ago when he heard I was back at his alma mater, SUNY Empire, to get my Master's. He told me I would do it, and I couldn't let him down. The fact that he created the scholarship clearly demonstrates how he felt about the opportunities provided to all students.

We at Empire strive to honor that trust in us by continuing to reach out to our students, alumni, and dedicated friends over the years. It is further exemplified in the story of Robert Ehrmann who graduated even earlier than Joe, in 1978. Mr. Ehrmann moved to Georgia years ago, but was happy to reconnect with Empire staff and last year he left the school the largest gift we have ever received through his Boyer Legacy Society bequest. He and my friend Joe will be missed, but their good work continues here. Along with Rodney Pope, whose story is included in these pages, the Empire State College Foundation celebrates not just these individuals but all of our donors. Their loyalty and recognition of the work done here by dedicated faculty helps our students meet challenges and achieve their dreams.

Please read the story of the Center for Autism Advocacy: Research, Education, and Supports (CAARES) for an example of how much your contributions to the college assist students in conquering a wide variety of challenges.

The Foundation is appreciative to the staff for their outstanding stewardship of funds, committed to staying in touch with you, and grateful for your support in 2022.

Marian Conway, Ph.D. '01, '04
Chairwoman, SUNY Empire State College
Foundation Board of Directors



A MESSAGE FROM THE PRESIDENT

EMPIRE STATE UNIVERSITY PRESIDENT

LISA VOLLENDORF, PH.D.

On behalf of Empire State University, I extend our deepest gratitude for the support you have given our institution and our students over the past year.

Through your gifts, you have provided funding for crucial resources for our students — from scholarships and support programs to student programming and technology. Your contributions help our students overcome common barriers to education so they can achieve their personal, academic, and professional goals.

Your support is also a tangible reminder of the power of giving and the generational difference it can make in the lives of students and their families. When you support SUNY Empire, you're actively and directly supporting the next generation of students to make a positive impact on the world. We are proud to be New York's access institution.

In 2022, the SUNY Empire State College Foundation allocated **\$1.5 million** to assist with critical collegewide initiatives, including awarding nearly **\$770,000** in direct financial assistance to students, funding faculty research projects, and launching new programs and partnerships — all markers of our thriving educational community. None of this would be possible without you.

I'm excited to share that this year we launch our new strategic plan — a five-year roadmap that focuses our institutional priorities on student success, inclusivity, organizational effectiveness, and raising our profile. I look forward to sharing our progress with you over the next several years.

I am honored to be part of the SUNY Empire community, a committed group of educators, professionals, alumni, and friends who believe in the power of education and invest in the future of our students, the institution, and society as a whole.

This year's Impact of Philanthropy report demonstrates the many ways we are an access-oriented institution focused on meeting our students where they are, leading the way in innovative, high-quality education, and living our mission and values in service to students every day. Thank you for your continued dedication to SUNY Empire and our students.

Warmly,
Lisa Vollendorf, Ph.D.
President



RODNEY POPE

REACHING BACK TO PROVIDE OPPORTUNITY

Rodney Pope never attended a class at SUNY Empire State. He isn't an alumnus. He's not a member of the board, or the faculty, or the staff. All the same, the mission and programs of SUNY Empire resonate with him, and he has become one of the college's most enthusiastic champions.

"The programs you offer are phenomenal," he pronounces.

He came into the fold of SUNY Empire through Dr. David Fullard, a faculty member in New York City, advisor to the Black Male Initiative (BMI) student club, and member of the Empire State College Foundation Board. Conveniently, he happens to be Rodney's neighbor in the same condo complex.

Rodney's involvement with the college started simply. "David and I were talking, and he was telling me about the college and his work with students in the BMI," he recalls.

"He knew I worked for Turner Construction and thought there could be some opportunities for graduating students here."

Rodney serves as the Senior Vice President of Employee Relations at Turner Construction Company, an international leader in commercial construction services, where he has worked for nearly three decades. Since his initial introduction to SUNY Empire two years ago, he's been meeting with students, helping them with their resumes, and introducing them to his colleagues.

"People think about the construction industry as people moving bricks in the cold, and that's only a part of the picture. The industry is intertwined with other fields – including accounting, legal, risk management – we have all these other support areas that offer numerous opportunities for people if they're not interested in working at a job site," he explains.



Rodney Pope (R), Robin Stone (L), and family

AFFORDABILITY AND THE SUNY EMPIRE EXPERIENCE

For the past few years that he's been mentoring students, he's gotten to understand and appreciate the SUNY Empire experience.

"People have a very good opportunity at SUNY Empire to start their educational journey as well as finish," he says. "One of the big hurdles for people trying to improve themselves educationally is affordability. I like the fact that SUNY Empire is affordable."

In addition to affordability, Rodney is struck by the individual attention that students at SUNY Empire receive. "A lot of universities are run like businesses," he says. "I was really impressed by how involved faculty and staff are with the students. That's a valuable asset that many colleges don't promote. That individualized attention and the interpersonal relationships can help people with support when they really need it."

THE POPE FAMILY SCHOLARSHIP

Supporting students comes naturally to Rodney and his wife, Robin Stone. "I'm big on helping people. My wife is a psychotherapist; she is big into helping people to help themselves." Their desire to help led them to establish an endowed scholarship for SUNY Empire students: the Pope Family Scholarship. In a nod to Rodney's own educational experience, the scholarship is awarded to historically underrepresented undergraduate students in the greater New York City area. With the Pope Family Scholarship, Rodney and Robin hope to support students who exhibit leadership in overcoming adversity, who embrace diversity in all forms, and who strive to improve themselves and their family by working as they pursue a college degree.

Rodney's rationale for the scholarship is simple. He says, "I want to give back. I benefitted by having my start in getting an affordable education and I want to make sure I can provide opportunities for others in this way, so they can be successful as well. Diversity is important. Giving back is important. I think that New York City is a tough place and whenever you can provide an opportunity for someone who lives in New York, it helps the city overall."



“THE RENT YOU PAY FOR YOUR ROOM HERE ON EARTH”

When he speaks of his support for SUNY Empire, along with the multiple organizations for which he volunteers or serves on the board, he talks about the “gift of opportunity,” which he hopes to inspire in others. “Everyone, once they take advantage of an opportunity, they should give back. Reach behind and give a similar opportunity to other people if you can provide it. We all stand on the shoulders of the people who came before us, so I see reaching back and giving back as an obligation. As Muhammad Ali is quoted as saying, ‘Service to others is the rent you pay for your room here on earth.’”

“EVERYONE, ONCE THEY TAKE ADVANTAGE OF AN OPPORTUNITY, THEY SHOULD GIVE BACK”

As for those students he is “reaching behind” to mentor and help with career counseling? Thanks to Rodney’s help, those students have become more employable and Turner has since hired several of them. He proudly reports, “It’s been quite a success, they’re doing well.” ■

Rodney Pope and Robin Stone

THE PATH TO BEING AN AUTISM SUPPORTIVE COLLEGE

THE CENTER FOR AUTISM ADVOCACY:
RESEARCH, EDUCATION AND SUPPORTS (CAARES) THRIVES
UNDER SUSAN H. TURBEN DIRECTOR DR. NOOR SYED

When Noor Syed thinks about advocacy in support of the Autistic community, she thinks of her cousin, Allahrakha.

Born in Pakistan in the 1980s, he was diagnosed with “severe and profound retardation,” at a time when such diagnoses were customary and intellectual and developmental disabilities were poorly understood. His parents brought him to the U.S., where doctors recommended an experimental surgery. The procedure left him incapacitated, and her cousin became a ward of the state, unable to live on his own. He died in September 2022.

“In my opinion, they were taken advantage of,” Syed says. “They were never empowered or given evidence-based therapy. My cousin lost all skills he had gained as a child. That made me passionate about empowering the individuals we serve and their families.”

Today, as the Susan H. Turben Director of the Center for Autism Advocacy: Research, Education and Supports (CAARES) at SUNY Empire, Syed is working to ensure that all neurodivergent people are given the opportunity to attend



college and to do so with the supports and respect they deserve. She wants to facilitate meaningful employment in communities that recognize and value the skills and talents of people who are neurodiverse.

It's a culture change that Syed is tackling on all fronts, with help from Lauren Allen, the CAARES assistant director, interns, and volunteer advisory teams at SUNY Empire that include Autistic alumni and students, caregivers, faculty, staff, and professionals in the field of autism. Their efforts also include partnerships with organizations near and far, including the Anderson Center for Autism in Staatsburg, NY, led by CEO and Executive Director Patrick Paul '94, and the Neurodiversity Hub in Australia.



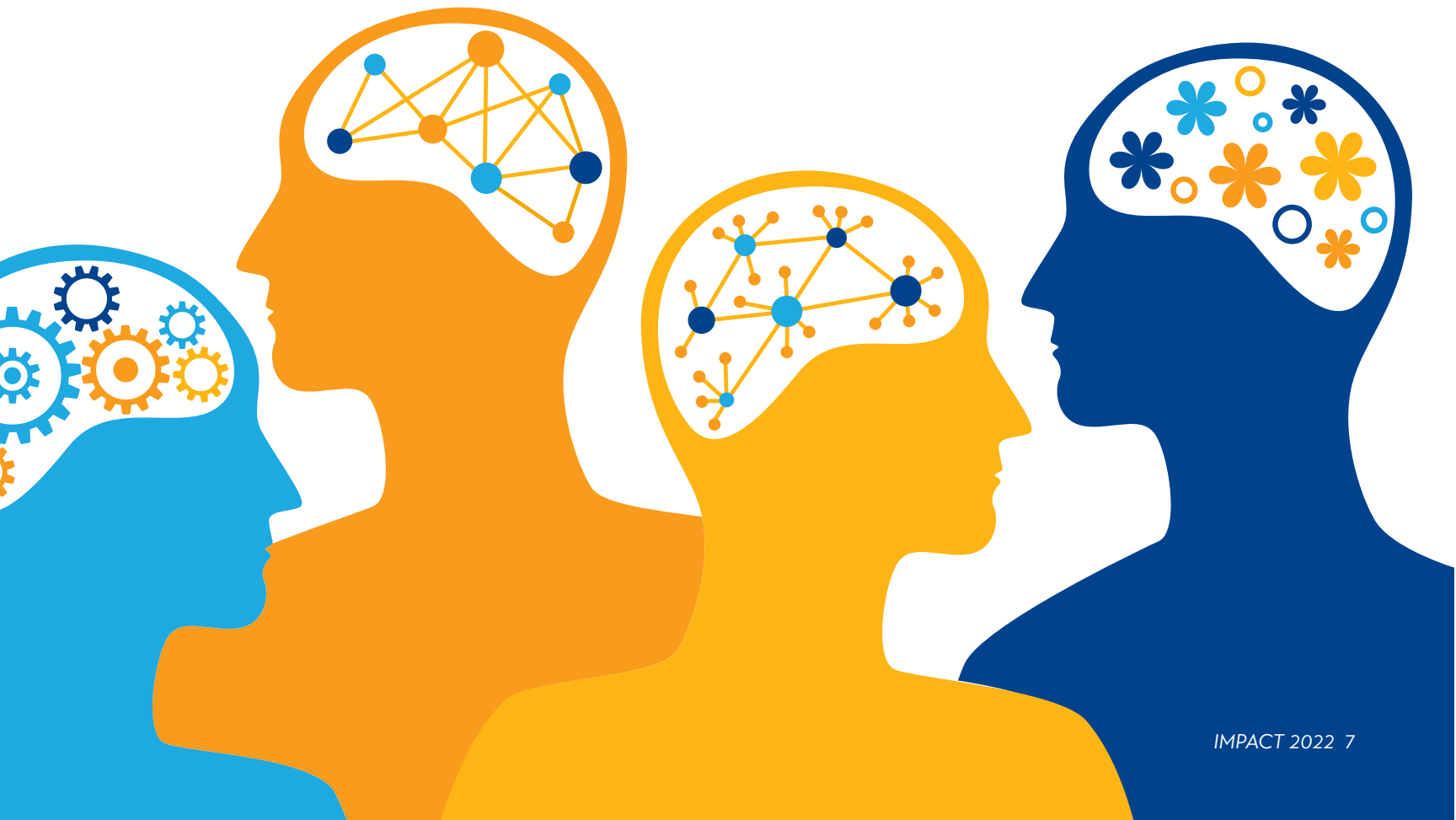
SUNY EMPIRE
CAARES
CENTER FOR AUTISM ADVOCACY:
RESEARCH, EDUCATION, AND SUPPORTS

THE COLLEGE CHALLENGE

According to data from the Centers for Disease Control and Prevention, autism is on the rise. Today, 1 in 44 children are diagnosed with this neurodevelopmental condition, which may cause differences in social communication and interaction, and restricted or repetitive behaviors and interests. Many also have delays in language, movement, and cognitive skills.

“AUTISM IS ON THE RISE. TODAY 1 IN 44 CHILDREN ARE DIAGNOSED”

Going to college is difficult for people with autism, according to the College Autism Network. The contiguous U.S. has about 100 college programs dedicated to students with autism, and about half charge additional fees for autistics. “There’s often a long waiting list, and many require registration and disclosure to be eligible, which makes some people uncomfortable,” Syed says. Students with autism are also less likely to graduate from college than their neurotypical peers.





Dr. Noor Syed, Susan H. Turben '72, H'05 Director

THE TURBEN CHAIR

Syed arrived at SUNY Empire in September 2020, where she was tasked with serving as the director of what was then called the Center for Autism Inclusivity, and working with the Anderson Center to launch the college's master's program in applied behavior analysis. The goal was to support students with autism, provide research on autism spectrum disorders, and educate faculty and staff on how to meet the needs of neurodiverse students.

Syed's work dovetailed with the personal and professional interests of Susan H. Turben '72, H'05, SUNY Empire's second graduate, a member of the Foundation Board of Directors, and a pioneer in the field of infant education and early childhood special education intervention. As president of Turben Developmental Services, she provided home-based educational and developmental services to families and developed video products related to child development and parenting.

Susan and her husband Jack Turben are also among SUNY Empire's most generous and longstanding supporters, having already established the Susan H. Turben Chair in Mentoring. As SUNY Empire began working to develop autism supports and degree programs, the Turbens were

the first to express an interest in financially supporting that work and agreed to create an endowment that would permanently fund the directorship of CAARES. With their support, Syed now serves as the Susan H. Turben Director of CAARES.

A HOLISTIC APPROACH

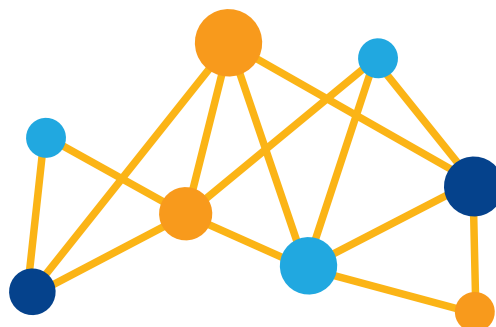
Under Syed's leadership and with the help of the Anderson Center and financial support from the Turbens, SUNY Empire's holistic approach to working with neurodiverse students is beginning to create the culture change that Syed envisioned. SUNY Empire has adopted both universal and multi-tiered supports that can help all students, not just those with autism. They're also providing faculty and staff training to better understand how these supports will work.

"We're helping the entire college community understand autism," Syed says. "We're working on embedding universal supports so that everybody can benefit, and then we'll have more intensive tiers for students if needed."

Other student-focused projects include a workforce mentorship program and a peer social connection program. Beyond the college, CAARES works with the Anderson Center to co-sponsor the annual Partnership in Applied Behavior Analysis Conference.

Last fall, the Anderson Center designated SUNY Empire an autism supportive college, meaning the college embeds supports into its culture, infrastructure, and planning to create an inclusive environment and improved academic experience for students with autism and other neurodiversities.

"When I started there were less than handful of students who had disclosed they were autistic," Syed says. "We've since had alumni and students reach out to CAARES and say, 'I'm autistic, or I'm neurodivergent, and I'm so glad this program is here.' What we're finding is there are a lot more students who are autistic than who have disclosed in the past. This tells us CAARES has made it more comfortable for people to open up and share about themselves." ■



IN THEIR OWN WORDS

STUDENT SCHOLARS REFLECT

Words From Student Scholars:

Anne Culler '22, Matthew Berge '21, & Shanelle Brooks '21

IN THEIR OWN WORDS STUDENT SCHOLARS REFLECT

ANNE CULLER '22

JOSEPH GOLDBERG MEMORIAL SCHOLAR & PRODIG INITIATIVE SCHOLAR

Anne Culler '22



Alumna Anne Culler is pursuing a Bachelor's degree in Historical Studies with a concentration in African American History and Culture. She previously received her Associates in Cultural Studies. She is a member of the SUNY PRODiG (Promoting Recruitment, Opportunity, Diversity, Inclusion and Growth) initiative, which aims to increase the number of historically underrepresented students seeking higher education faculty positions. She is a multi-year recipient of the Joseph Goldberg Memorial Scholarship, awarded to undergraduate students studying arts, human services, or interdisciplinary studies. Anne and her husband Albert Culler '21 are both current SUNY Empire students.

"Due to family obligations, I had to postpone my dream of attending college until later in life. My father was a doorman in a residential building and the pastor of a church in Brooklyn. My

mother became a home health aide after migrating from Jamaica, West Indies. Although I was accepted into three colleges after high school, my parents could not afford it, so I went to work instead of school. Marriage and a subsequent divorce further deferred my education.

I was the sole supporter of my daughter, and I worked as a legal assistant during the day and a word processor during the evenings to make ends meet. Although I have had professional success as a legal assistant, I always felt something was missing because I had not attended college. My parents never attained higher education, and I wanted to fulfill this dream for myself and for them.

I am remarried; my husband Albert attended SUNY Empire before I started. He loved the learning environment and suggested that I enroll. I was apprehensive at first, but with his encouragement I took the leap. My husband is very active in the college community, and we support and encourage one another because we both know how long it took us to travel this path and how important it is.

After completing my Bachelor's in Historical Studies, I plan to continue for a Master of Arts in Teaching and aspire to become a teacher. I have always been enthralled by history. My concentration in African American History and Culture exposes me to facets of my culture, the history of my people, and what my ancestors had to endure as a product of enslavement. While pursuing my degree, I have learned about other cultures and

the common thread of resiliency and social bonds that have survived the test of time. I believe this knowledge is imperative in understanding diversity and human experience and will aid me when relating to my students.

I was accepted into the inaugural cohort of SUNY Empire's PRODiG Scholars Program in the fall of 2020, which supports underrepresented student scholars who aspire to obtain faculty positions. After being accepted into the program and gaining valuable resources and networking opportunities, I was fortunate enough to get a Teaching Assistantship and a Research Assistantship, both of which gave me insight into the teaching process and mentorship from the professor.

I am so glad I decided to attend college, and even more so because of my positive experiences at SUNY Empire. The faculty and administrators at SUNY Empire provide a smooth transition for adult learners to further their educations. SUNY Empire recognizes the skills and experiences students gain throughout their lives through Prior Learning Assessment (PLA), which enables you to save money and time while earning your degree. I love that you are assigned a mentor who guides and directs you as you pick your classes and is there to support you and answer any questions you may have along the way. I am truly honored to be a recipient of the Joseph Goldberg Scholarship and for the generosity that has enabled me to continue pursuing my goals." ■

MATTHEW BERGE '21

DRS. JAMES GIBSON AND PATRICIA BROZINSKY SCHOLAR
SUNY ACT FOR EXCELLENCE AND COMMUNITY INITIATIVE SCHOLAR

Matthew Berge '21



In addition to receiving the Drs. James Gibson and Patricia Brozinsky Scholarship, Matthew Berge was honored with the SUNY ACT for Excellence and Community Initiative Scholarship, a SUNY-wide academic award given to students selected from throughout the entire 64-campus SUNY system. Each campus can nominate one student per year to be considered for the award. An active student volunteer and officer in the Student Government Association, Matthew graduated Summa Cum Laude with a Bachelor's degree in Social Science in 2021 and is completing a Master's degree in Social and Public Policy in 2023.

"I stumbled upon SUNY Empire on accident when I went to an orientation for another program. That orientation was next to the SUNY Empire office in the same building in Hauppauge, NY,

so it was nearly impossible to miss it! I also became a father around that time, I stayed home with my son because I could not work due to my disability. I decided to hold off on my education until my son entered elementary school, but I kept Empire in mind. In 2018, I renewed my ID at the DMV in the same building and was reminded of Empire again.

When I earned my Associates at SUNY Suffolk, I excelled in online classes, which made SUNY Empire appealing. After learning about the ability to design your degree plan and options to take Independent Study courses, I knew SUNY Empire was the right choice for me. When I began in the fall of 2019, I designed a degree plan combining elements of sociology, political science, and public policy, along with health and disability studies, to create a transdisciplinary Social Science major that my undergraduate mentor, Dr. Dee Britton, most aptly titled Social Science: Government, Health & Society. Little did I know that a global pandemic was on the horizon, making this unique degree plan ever more important, as I was essentially studying current events once the pandemic began.

As an undergraduate, I was fortunate to receive the Joseph L. Mancino '80 Family Scholarship, which helped me complete my undergraduate studies. Approaching graduation, I felt my time at SUNY Empire was not complete, so I applied for early admission to the Graduate School in February 2021 to build upon my degree in Social Science with a

Master of Arts in Social & Public Policy. That spring, I completed my Bachelor's with a 4.0 GPA, graduated summa cum laude, and entered SUNY Empire's Graduate School in the fall 2021 semester. I'm finishing my Master's after the Spring 2023 semester and I have maintained my 4.0 GPA throughout grad school with only two classes remaining.

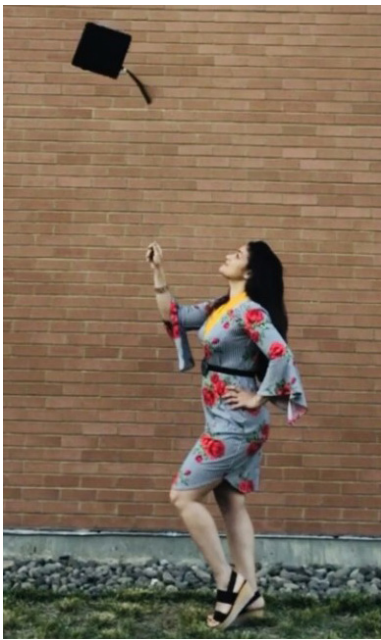
I plan to pursue a Ph.D. in either Sociology or Public Health, seeking a career in academia, preferably at SUNY schools! My initial plan when I enrolled as an undergraduate was to pursue a career as a disability advocate, working for a non-profit like the American Association of People with Disabilities (AAPD) or the National Organization for Rare Disorders (NORD), as my disability, Stiff Person Syndrome, only has a case rate of one in a million.

SUNY Empire offers a unique opportunity to learn in various modalities. Although SUNY Empire has always offered distance learning, the pandemic brought new opportunities like the Student Government Association and eSports, both launched in 2020, to foster a sense of community for online learners. I encourage prospective students to engage with opportunities like the SGA or eSports because they genuinely create a sense of belonging despite not being in the same room with peers." ■

SHANELLE BROOKS '21

JOSEPH L. MANCINO '80 FAMILY SCHOLAR

Shanelle Brooks '21



Shanelle Brooks graduated with an Associates degree in 2021 and this year is finishing her Bachelor's degree in Psychology. A mother of two, Shanelle works for the New York State Department of Health and plans to use the knowledge gained through her Psychology program to provide additional support to the individuals in her care.

The Joseph L. Mancino '80 Family Scholarship was established by late alumnus, banking executive, active community volunteer and

philanthropist Joe Mancino. A longtime member of the Empire State College Foundation Board, Joe passed away unexpectedly on his 85th birthday in September 2022. The Mancino family motto is "When you are successful, you should give back to others who are not as fortunate as you are." Shanelle embodies that motto in her own goals and aspirations.

"I look forward to finishing school at SUNY Empire to share my dreams and accomplishments with my loved ones. My family – especially my mother – is my greatest motivation, and they know how hard I've worked to earn my degree. My mother's legacy has given me the strength, motivation, and self-encouragement instilled in me throughout my journey, and she has made me the person I am today.

After receiving my Bachelor's degree, my goals are to advance professionally within my career in the New York State Health Department and beyond. During the pandemic, I had the opportunity to work outside my job description to service a greater need for the residents of New York State. What I enjoyed most was helping many individuals remain healthy and staying safe physically and emotionally. Majoring in psychology has allowed me to further understand the human mind and provide emotional support to individuals in need. I look forward to educating and

supporting individuals to stay healthy, and plan to continue my education with graduate studies in Health Informatics.

Transferring to SUNY Empire from previous colleges has been a great experience. My college education began as a traditional freshman student in Liberal Arts, and later on in a program in court reporting. While working for the State Health Department, I realized a new career path in health. Working to help the residents of New York remain healthy became important to me, and what I enjoyed doing most. SUNY Empire has made my career opportunities a wonderful and exciting success.

SUNY Empire is a great school that is always there when you need them! SUNY Empire provides tremendous support and guidance from its mentors, professors, IT staff and beyond. SUNY Empire understands and focuses on the needs of their students. While working endless hours during the pandemic, raising a family, and enrolled full-time in online courses for my Associates degree, SUNY Empire understood the situation, and gave me all the time I needed to finish the semester. SUNY Empire was a great choice for me. I truly couldn't have chosen a better college, and overall learning experience, anywhere else!" ■

THE FOUNDATION'S 2022 FINANCIAL REPORT



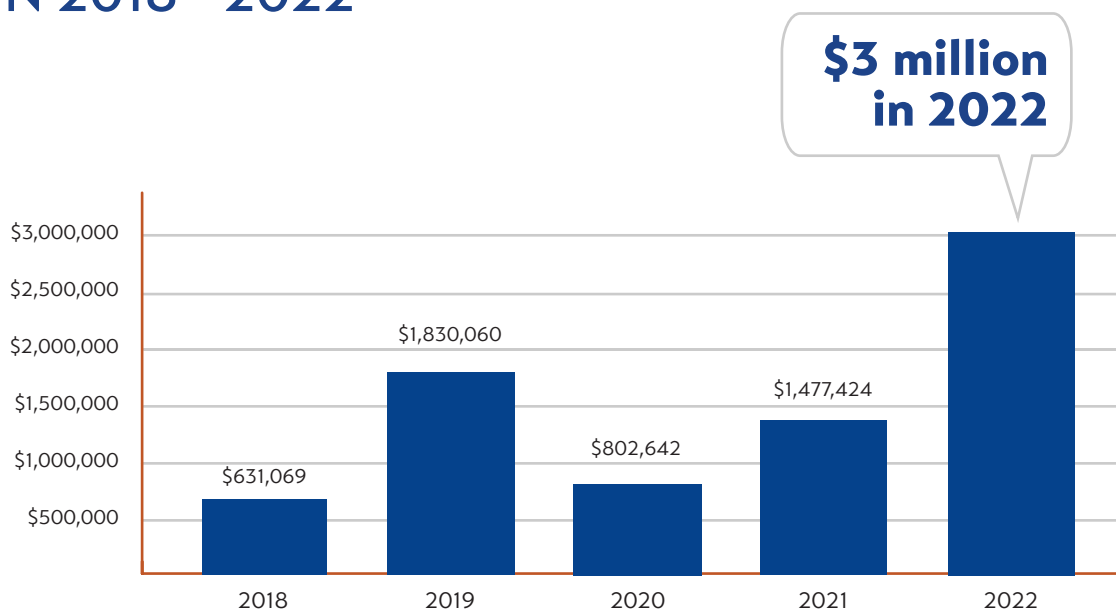
Through the support of our alumni, employees, and friends, the Empire State College Foundation provides invaluable resources to students, as they learn academic expertise, develop the skills to become leaders in their field, and achieve the lives they have dreamed of. We are grateful to those who supported the foundation in 2022, and made it possible for SUNY Empire students to be **Learning, Leading, and Living** to their fullest potential.

TOTAL FUNDS RAISED IN 2022

Despite a challenging market environment, 2022 was the foundation's highest-ever fundraising year. We raised **\$3,018,198**, more than doubling the \$1.4 million raised in 2021. A generous gift of **\$1.69 million** from the estate of alumnus Robert Ehrmann '79 impacted this figure significantly.

The total includes gifts and pledges directed to The Fund for Empire State University; restricted support of individual scholarship funds and other dedicated accounts; estate and planned gift commitments; and corporate and foundation grants and matching gifts.

TOTAL FUNDS RAISED IN 2018 - 2022



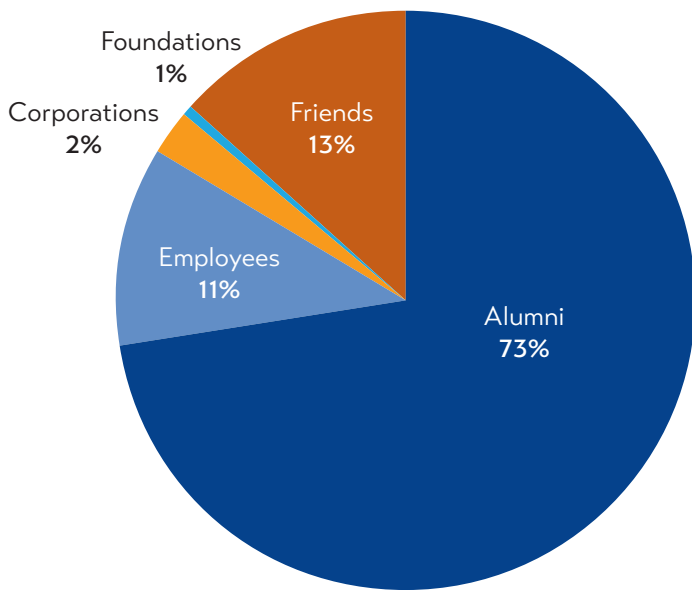


The Fund for EMPIRE STATE UNIVERSITY

The most impactful way that people support the college is through The Fund for Empire State University. The fund broadly supports students, academic programs, and employee development across the college each year.

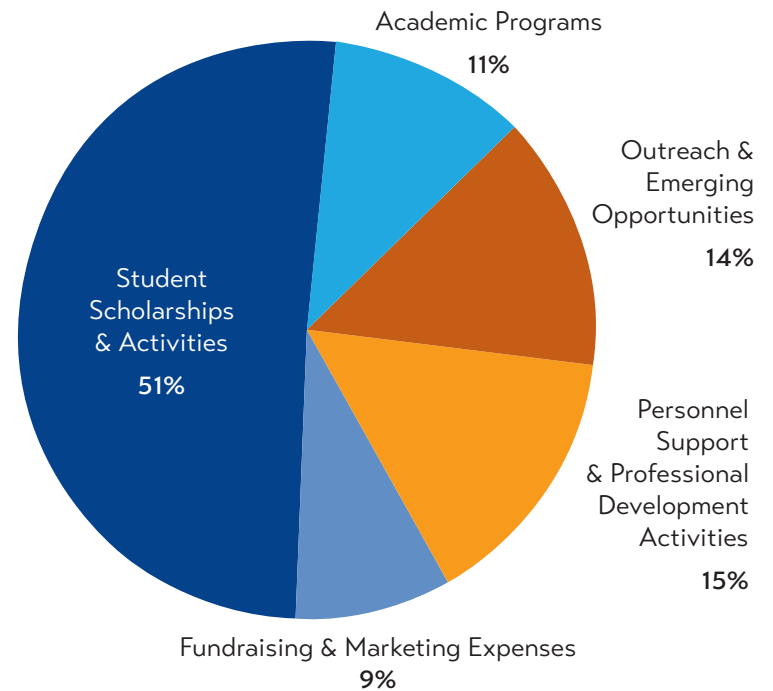
In 2022, individuals, corporations, and foundations made gifts totaling **\$415,894** to the Fund for Empire State University, an increase of 21% over the previous year.

Gifts to The Fund for Empire State University are distributed among the greatest needs of the institution, including scholarship funds. The Financial Aid Office awarded 40 students in 2022-23 with Fund for Empire University Scholarships. The recipients were selected on the basis of financial need and academic promise, and the funding is often crucial to helping students complete their degrees. As one student expressed upon receiving the award, "I would not be able to continue college without your help."



TOTAL NUMBER OF DONORS TO THE FOUNDATION BY CATEGORY

1,236 donors contributed to SUNY Empire in 2022, including alumni, friends, foundations, corporations, and employees. College alumni make up more than two-thirds of the foundation's supporters.



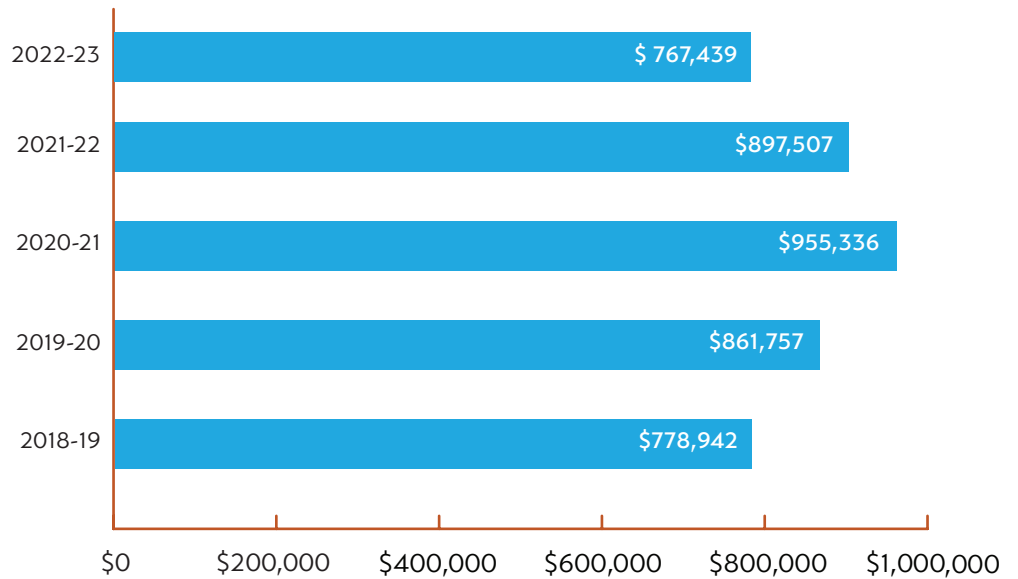
FOUNDATION ALLOCATIONS FOR 2022-23

The foundation provided **\$1.5 million** to be distributed to various college programs and initiatives throughout the 2022-23 academic year. Half of which is distributed to students through scholarships and other student programs; the remainder is utilized for academic program support, outreach to potential students and partner organizations, professional development for faculty and staff, and other fundraising expenses.

SCHOLARSHIP AND STUDENT ACTIVITY SUPPORT

Students received \$767,439 in scholarships and other activity support in 2022-23

The past few years saw a marked increase in one-time scholarship funding due to COVID-related emergency relief awards. We are committed to maintaining robust funding for scholarships and other student activities, despite the volatile market conditions over the past year.

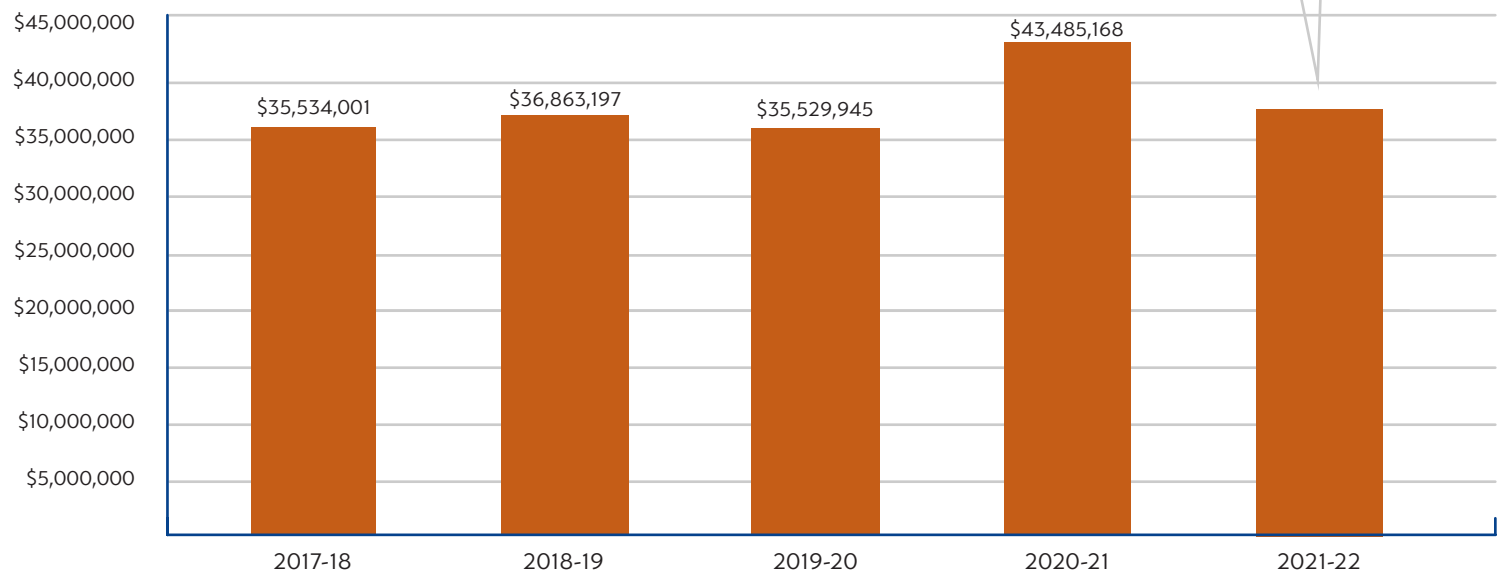


TOTAL ASSETS OF THE FOUNDATION

Assets as of June 30, 2022 totaled \$37,289,291

Assets of the foundation totaling \$37.3 million include investments, real estate holdings, gifts and pledges, property and equipment, and other receivables. The drop in value of assets between Fiscal Year 2021 and 2022 is largely due to the change in market value of investment funds. The value of property and other cash assets remained steady

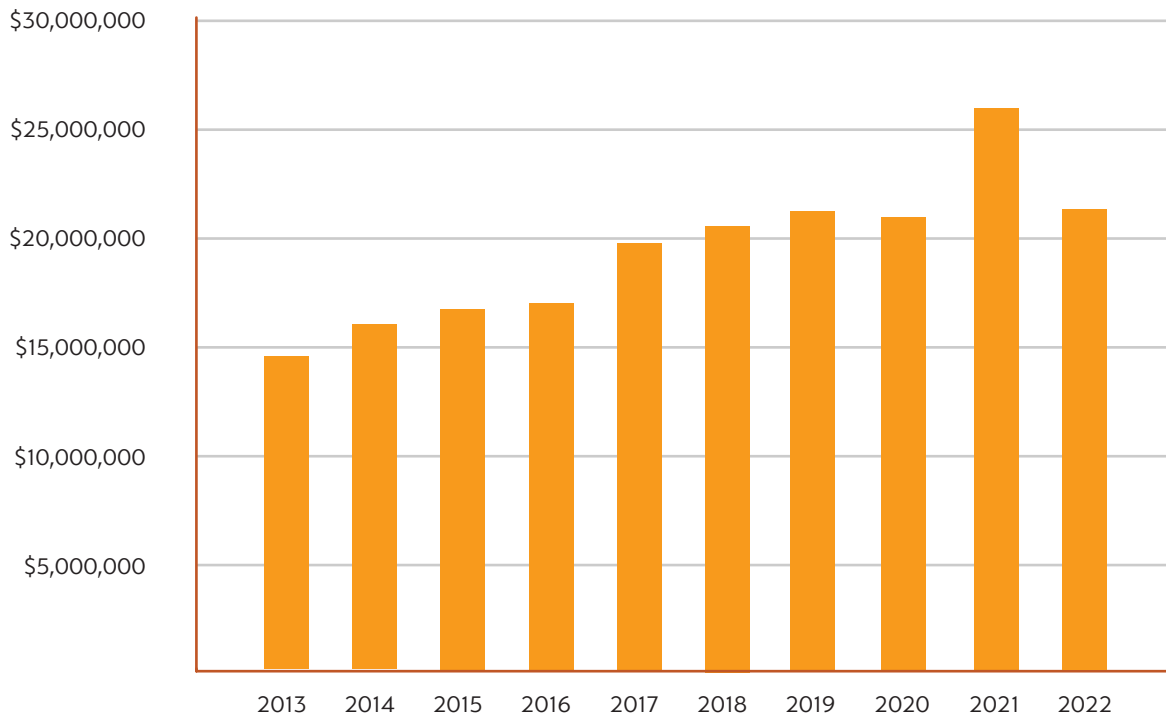
\$37.3 million in 2022



TOTAL ENDOWMENT VALUE 2013-2022

Endowment value as of June 30, 2022 was \$21,985,717

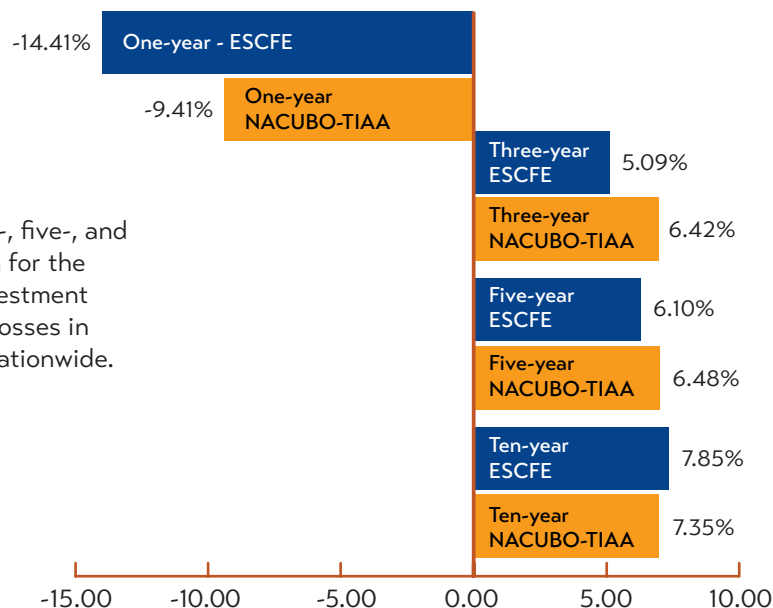
Over the past decade, the value of the foundation's endowment has grown from \$14.5 million to nearly \$22 million in 2022. The endowment fund provides a stable source of revenue to support student activities, academic programs, and other outreach efforts throughout the year.



INVESTMENT PORTFOLIO PERFORMANCE

As of June 30, 2022. The one-, three-, five-, and 10-year average annual rate of return for the Empire State College Foundation investment portfolio. The portfolio experienced losses in 2022 typical of investment returns nationwide.

- Empire State College Foundation Endowment
- NACUBO-TIAA Study of Endowments 2022



BOYER LEGACY SOCIETY



The Boyer Legacy Society recognizes and acknowledges those individuals who have named Empire State University in their will or as the beneficiary of a trust or other planned gift.

Membership represents an outstanding commitment to the college and helps ensure that Empire State University maintains its leadership in higher education for adult students who seek better jobs and careers, richer intellectual lives, and sophisticated skills that are essential to be knowledgeable citizens of the nation and the world.

Robert
Ehrmann '78



A TRANSFORMATIONAL BEQUEST FROM ROBERT EHRMANN '78

\$1.69 million gift is the
largest in school's history

In 2022, the college received the largest gift ever made to the institution from the estate of alumnus Robert Ehrmann '78, a longtime donor to the Fund for Empire State University. His bequest of \$1.69 million will be used to support student scholarships and initiatives that further the college's mission and expand access to education.

Bob received his undergraduate degree in business, management and economics, and went on to pursue a successful career in industrial manufacturing. Bob and his late wife Kathy lived in Alpharetta, GA. He was originally from New York and studied at the Northeast Center in Latham, N.Y. during the college's early days. Throughout his life, he remained grateful for his SUNY Empire experience, expressing that it taught him to write and advanced him professionally in the field of engineering and computer science.

Of Bob's generous forethought, SUNY Empire Foundation Board Chair Marian Conway '01, '04 said, "Bob was an engaged alumnus, a regular donor to the Fund for Empire State University, and a lifelong champion of the college. Even after he moved out of New York State, he remained involved in alumni programming and valued his experience at the college. His generous bequest honors the school and the faculty, and, especially, future students. Bob knew that each SUNY Empire student has a unique story to tell. We share the amazing stories of current students and our alumni, staying in touch and continuing to celebrate their success at SUNY Empire long after graduation."

MEMBERS OF THE BOYER LEGACY SOCIETY



Anonymous
Norris G. Adams '82
Keith D. Amparado '88
Marla C. Andolora '14
David Asch '83
Allen Bailey '19
Joann Bailey
Ute Elisabeth Barber '93
Sharon E. Baum '07
Pasquale J. Beldotti '75*
Juliene Bell-Smith '20
Juanita Belmar '17, '19
Adrienne D. Berg '11
Anne R. Bertholf
Susanna Bezold '98
Henriette Bleck '16
Deborah Botch '86
Kathryn (Kay) Boyer '78*
Felicia Brightman-Smartt '17
Susan K. Butler '06
Patricia M. Callahan '94*
Bobbi Jo Carter '18
Sara Elizabeth and
Matthew Christ '21
Hortence S.*
and Warren R. Cochrane*
Maxwell Cohen '76, '85*
Willie A. Cornelius '13
John '94 and Jane Corrou
Gordon Darrow '87*

George Glenn Dawson*
Philip J. de Carolis '92, '97*
Dennis R. De Long
Maureen C. Del Giacco '86, '95
Joseph Demma '21
Yanelys Diaz '16
Tyrone M. Dixon '01
Nancy J. Dorau '18
Sandra Bauhan DuBois '78
John L. Dunne '83*
Robert H. Ehrmann '78*
Joyce E. Elliott
and Cynthia M. Swadba
Joan A. Englehart '84
Kimberley Mae English '15
Carol J. Evans '77
Marnie Evans*
Astrid Ewing '82
Ronald D. Falciano '09
Debra M. Federation '21
and Brendan J. Komala
Dunia Pamela
and Claudio Fernandez '13
Catherine M. Ferraro '98
Muriel Fickler '85*
Linza Ford '91
Patricia M. Fralick '01
Mark '78 and Marjorie Fuhrmann
Bailey M. and Elaine Geeslin
James Aloysius Gibson*
and Patricia Brozinsky
Margaret R. Gibson '85
Alison D. Gilbert '92
Sidney Gluck '79
Angelica Godette '13
Doris Goldberg
Emma Gomez '79, '81

Mark Granfors-Hunt '01
James William
and Mary Elizabeth Hall
Hugh B. Hammett
Merodie A. Hancock
Jacqueline Christine Hannon '15
MaryAnn Hannon '09
Jessica A. Harrington '12
Jayne Regan Harris*
Philip Hilden '82
Susan T. Hollis
Dwight Hakeem Hopkins '22
Michael C. Hubbard '75
Joanne R. Hvidsdas '92, '93
Donald Lee Johnson '98
Robert '96* and Carolyn* Johnson
Tina Marie Jones '09
Stephen C. Kasper*
Davida Delores Kilgore '05
Judith (Suzy) Kline '86
Susan A. Koch '01
Pamela Kone '90*
Michael Robert Lamb '15, '18
Deborah and Don Lansing
Corine Lawrence '85
Paulette L. Lawrence '16
David F. Madden '78*
Margaret Madigan '20
Janet Lorri Manning '21
Addie R. Marrow '11
Keith Martin '84*
Nancy E. Massicci '09
James A. Matte '76
David '10 and Joy Mazzetti
Margaret McAloon
Terrence McCafferty '80, '03

Jennifer Ann McCallum '21
Shana D. McIntosh '10
Nancy A. McLachlin '81*
Caleah K. McMillan '18
Marjorie Meinhardt '77
Maureen Meloy '92*
Stephen Keep Mills '89
Angelina Monell '08
Joe Moore and Beth Chiquoine
Harold P. Morrill '04*
Marion C. Morse '81*
Jessica Marie Naioti '12
Mele Nelson '07
Mitchell S. Nesler
Kaytlyn Rose Nevelizer '20
Michael P. Nugent '13
Athina Pantidou '10
William H. Parker '86
Roberta Parry '08
Lisa Patterson '18
Rohan S. Patterson '06
Kathleen Pepin '94
Sandra M. Perez '17
Patricia Polak '87*
Kenneth S. Porter-Hutton '01
Sharen L. Whitley Privette '21
Tamara M. Radcliffe '14
James R. Rahm '06
Anthony Riccardi
Deanna L. Riddick '03, '05
Marie D. Rivas '16
John M. Robortella '01
Ladonna K. Sanders '20
Arnold W. Scott '16
Helese J. Smauldon '18

Pearl Somner '88*
and Basil Merle Debuskey*
Anne '89 and John Sonne
Marian N. Steinberg '75
Bernadette T. Stengel '88
Bernard Stern*
Mary H. Stock*
Lisa L. Sunday '16
Carol S. Tan '90
and Michael M.H. Tan
Ralph Thelusma '16
Henry J. Themal '82*
Rachel S. Thibodeaux '96
Dorothea Threatt '74*
Rebecca A. Tipa '03, '16
Edward* and Dorothy Todd*
Monte I. Trammer '08
Charles P. Trudel '79, '95
Susan H. Turben '72, H'05
and John F. Turben
Ann Turner '86
Sharon Villines
Karin C. VonKay '79
and David C. Duggan
Carey A. Wainwright '00
Felicia Helene Walker '11
Mabel B. '79* and T. Urling Walker*
George Lamont Warren '18
James Weatherstone '12
Susan Marie Weber
Virginia Weiss '88*
Merrick Anthony
and Susan Rasheedah Wesley '17
Karen West '84, '95
Gareth Williams '07
Lillie M. Williams '97
Eldon R. Williamson '94

Judith '02, '04 and Jack Willis
Gloria Jean Wright '79
John Wright '98*
David Yamada '99
Cynthia Zaentz '89

**Deceased*

The Boyer Legacy Society is named in honor of former Chancellor of the State University of New York, Dr. Ernest Boyer, pictured below.



THE PRESIDENT'S CLUB

The President's Club recognizes our most generous alumni and friends who make gifts totaling \$500 or more throughout the year. Members of the President's Club share the college's vision and demonstrate their dedication and commitment through their leadership support.



Jawana Carter-Richardson '16, '18, '21 (L) with President Lisa Vollendorf (R) at the 4 Park Avenue location in Manhattan.

"As a three-time alumna and now Master's Candidate, SUNY Empire has been a phenomenal resource and support system for me, both professionally and personally. I pay my gratitude forward by donating at the President's Club level to support the 'greatest needs' of the college, the student/alumni programs, and the communities SUNY Empire serves."

- Jawana Carter-Richardson '16, '18, '21

MEMBERS OF THE PRESIDENT'S CLUB

Founders Society

\$5,000+

Anonymous (4)
Charles R. Wood Foundation
Davin Healthcare Workforce Solutions, Inc.
Estate of Robert H. Ehrmann '78
Joyce E. Elliott and Cindy M. Swadba
ESL Charitable Foundation
Debra M. Federation '21
Jacqueline C. Hannon '15, '18
Beverly A. Hays '99
Michael Hess '12
Hess Family Charitable Fund
Brendan J. Komala
Gudrun E. Lange '88 and Benjamin Natelson
Marion C. Morse '81*
Organization for Autism Research
Rohan S. Patterson '06
Rodney Pope and Robin Stone
Richmond County Savings Foundation
Rochester Area Community Foundation
Stephen B. Simon
Marian N. Steinberg '75
Estate of Mary H. Stock
SUNY Impact Foundation Inc.
The Ichigo Foundation
David '13, '17 and Susan Theobald '16
Sonia Usatch-Kuhn '97
Lisa Vollendorf and Scott Votey

Consecutive Contributions of 3+ Years

Robert and Patricia Carey
Sue Epstein
Fidelity Charitable Gift Fund
Robert '98 and Kathryn Lento
Larry and Ida Snavley
Vanguard Charitable

Consecutive Contributions of 10+ Years

Richard Bonnabeau
Phillip B. Catchings
William P. and Susan Law Dake
Dyson Foundation
Tina '97 and Wayne Evans
David Fullard
Monah '77 and Alan Gettner
Julia O. Wells Memorial Education Foundation
David '10 and Joy Mazzetti
The Community Foundation for the Greater Capital Region
Gal Tirosh '92
Ann '86 and Bruce Turner '86
Melva D. Visser '81, '83, '96

Consecutive Contributions of 20+ Years

A. Lindsay and Olive B. O'Connor Foundation
Keith Amparado '88
Lorrie Anthony
Marian Conway '01, '04
John '94 and Jane Corrou
James '79 and Christine '93 Karcher
New York Community Bank Foundation
Stewart 's Shops
Susan '72, H'05 and John Turben

Builders Society

\$2,500-\$4,999

Anonymous (2)
Dora Cervantes '18, '19
International Association of Machinists
and Aerospace Workers IAM
Voya Financial (ING)
Lillie Mae Williams '97, '98

MEMBERS OF THE PRESIDENT'S CLUB

Consecutive Contributions of 3+ Years

Greenburgh Democratic Town Committee
Richard P. Hasenauer
Scott and Julie Johnson
Jay R. Marshall '06, '08
The EMSS Foundation, Inc.
The MVMA Foundation
Amelia J. Vaillancourt '98

Consecutive Contributions of 10+ Years

Fred & Floy Willmott Foundation
Mary Ann Policastro '10
Anastasia L. Pratt
Catherine M. Szency '87

Consecutive Contributions of 20+ Years

Meg Benke
Brian F. Curran '80
Alan D. Mandell
Ellen '80 and Martin Sperber '80

Partners Society

\$1,000-\$2,499

Anonymous (3)
Joann Bailey
Clifford Beck
Bergen County United Way
Stephanie K. Blackwood
Lawrence A. Clancy
Anne Dunne
Christopher Duryea
Kimberley Mae English '15, '17
Anita P. Fiorillo '76
Joseph Fuld

Margaret R. Gibson '85
Dwight Hakeem Hopkins '22
Marjorie W. Lavin
Corine Lawrence '85
Paulette L. Lawrence '16
Mary Leonard
LPL Financial
Julieta M. Majak
Donna L. Mautone
William T. McAlpin '95
Ann Nicholson Wright
Angelo Pastizzo
Prestwick Chase Inc.
Dorothy Semans '82
The Andrew U. Ferrari Foundation
Barbara Tischler
George L. Warren '18
Susan R. Wesley '17
Merrick Anthony Wesley
Dianne and Daniel White

Consecutive Contributions of 3+ Years

Constance '84 and Peter Barker
VanRil A. Brown '00
Arnold and Carol Ann Firestone
Joel '14 and Irene Fisher
Robert P. Goodman '83
Mary C. Houston '95
John Paton Incorporated
Lake Placid Education Foundation
Katherine J. Lewis '93
Althea E. Luehrsen '02, '10
John Maggiore
Lissa Mattson
Margaret McAloon

MEMBERS OF THE PRESIDENT'S CLUB

Mary Ellen McGory '84
Joseph B. Moore and Beth Chiquoine
Janice Mary Novello '83
Dean C. Paton '06
Robert J. Roach, Jr. '96
Paul L. Siegel '95
Kim Storti Stote
Joseph Washington and Sonia Mankovitz
Estate of Virginia Weiss

Consecutive Contributions of 10+ Years

Nicola Marae Allain
John M. Beckem
Steven P. Capone '88
Robert Congemi
Barbara '91 and Andrew Ferrari
Lydia '13 and Roy Landesberg
Philene Foundation
Michael V. Polito '97
Mary Raymond '99, '04
James '05 and Jeanmarie Roth '05
Linda W. Weiss '83
Karen West '84, '95

Consecutive Contributions of 20+ Years

Ruth '74 and Edwin Decker
Chris '86 and Diane Feeley
Claudia Shacter-deChabert '90
Nicole H. Shrimpton
Verizon Foundation
David C. Yamada '99

Investors Society

\$500-\$999

Anonymous (2)
Eleni Arbuckle '16, '18
Adrienne D. Berg '11
Bessemer Trust
Albert Culler '21
Gerald W. Gentner '74
Jeff Guillot
Hugh B. Hammett
Andrew Kessler
Rhoda M. Kratenstein '90
Ellen Marie Liberatori '18, '22
Jonathan Lipshutz
Claudia Loftis
Jim and Jenny Malatras
Audeliz Matias
Eileen M. McDonnell
Phillip G. Myers '88
Rich Neimand
Neimand Collaborative
Jeanette A. Parker
Marjorie A. Piech '00
Jane M. Quinn '10
Sarita Patterson Roy '76
Pamela H. Say '17
Charles H. Starks '75

Consecutive Contributions of 3+ Years

Holly L. Balmer '11
Jane Belote
BNY Mellon Pershing
Alexandra Bonitatibus
Jawana Carter-Richardson '16, '18, '21
Deborah H. Cooper
Todd and Ellen Downing

MEMBERS OF THE PRESIDENT'S CLUB

Julie A. Gedro
Nathan E. Gonyea
Rochelle M. Gorgos
Tom Grunfeld
Jim and Liz Hall
Nan Lipsitz Haynes '88
Andrea Hennessy
William R. King '74
Dennis P. Lestrangle '07
Julie Ellen Milner
Phyllis Miyauchi
Kelly Ann O'Neill-DiCarmine '18, '21
Patrick D. Paul '94
Joseph E. Phillips '16
William D. Ruttan '75
T. Rowe Price Program for Charitable Giving
Kimberlea VanDerwoude '16
Lynae E. Warren*
Edward Warzala
Linda Wilk '93, '96
John C. Wilt
Nancy Woykowski

Consecutive Contributions of 10+ Years

Jane* and Wally Altes
Evelyn '99 and Francis Buchanan
Jane Cudmore
Patricia E. Davis
James '96 and Annette Del Rossi
Elaine M. Donohue '79
Barry Eisenberg
Catherine '83 and Kevin Fager
Evor L. Ingram '74

Seana R. Logsdon
Alice Martin
Lear Matthews
Bridget Nettleton
Deborah L. Oberhofer '05
Maryann C. Osborn '10
Julie Shaw

Consecutive Contributions of 20+ Years

Joseph Angiello
Taimi M. Arnold
Brenda L. Copeland '92, '94
Arthur W. Haberl '79
Lisa Johnson
Diane M. Julian '01
Maureen Kravec
Kathleen R. Pugh '89, '91
Toby K. Tobrocke
Barry A. White '96
Maureen B. Winney

*Deceased

IN RECOGNITION OF FACULTY EXCELLENCE

Thanks to the generosity of alumni and friends who have established funds to recognize and support excellence in teaching, mentoring, and service, our faculty and staff can better serve their communities and create innovative programs that enhance the student experience at SUNY Empire. We are pleased to highlight this year's recipients of these awards.



Left to Right: Provost Nathan Gonyea, Altes Prize recipient Thalia MacMillan, and President Lisa Vollendorf with the late Jane Altes, who passed away in February 2023.

THE ALTES PRIZE FOR EXEMPLARY COMMUNITY SERVICE

The Altes Prize for Exemplary Community Service was established more than two decades ago by former Interim President and Vice President for Academic Affairs Jane Altes and her husband Wallace. The annual award is presented to a faculty member who uses insights from their academic discipline to address pressing social problems with outstanding community service.

This year, the Altes Prize was awarded to **Thalia MacMillan**, professor, mentor, and department chair of health and human services. Thalia has been a volunteer EMT since 2014, is a certified EMT instructor, and helps the ambulance squad apply for grant funding. As an EMT, she has responded to more than 700 calls. Thalia takes these same values and applies them to her social work, teaching, and mentoring, as well as her work in governance and on various committees across SUNY Empire. ■

THE JAMES WILLIAM AND MARY ELIZABETH HALL AWARD FOR INNOVATION

The James William and Mary Elizabeth Hall Award for Innovation was created by founding President Jim Hall and his wife Liz for faculty or staff who lead projects that promote the mission of the college. In 2021-22, the Hall Award was given to **Barrie Cline**, a faculty member at the

Harry Van Arsdale Jr. School for Labor whose courses connect students with filmmakers, union partners, and the public and incorporate the arts as part of their working lives. ■

THE ARTHUR IMPERTORE COMMUNITY FORUM FELLOWSHIP

The Arthur Imperatore Community Forum Fellowship also recognizes faculty innovation. The Fellowship supports scholarly research and artistic activity that impact our communities. The latest recipient is **Dan Nyaronga**, a professor of psychology and human development in the School of Social and Behavioral Sciences, who used the Fellowship to launch a New Experiential Learning program in the Spring 2023 Term. The program provides students with expanded internship opportunities, a new internship course, and a project portal showcasing their accomplishments as interns, including community service or research. ■

SUSAN H. TURBEN CHAIR IN MENTORING

In a nod to SUNY Empire's commitment to the student-mentor relationship, the college offers the **Susan H. Turben Chair in Mentoring**. The annual faculty award established by Susan H. Turben '72, H'05, a long-time member of the Foundation Board of Directors, honors a faculty member for their exceptional work as a mentor. This year's award was given to **Himaneer Gupta-Carlson**, an associate professor of American historical studies, who was recognized for showing her mentees how their lives connect with social conditions, as well as her extraordinary listening skills and creative sharing of her expertise with colleagues. ■



Turben Chair recipient Himaneer Gupta Carlson (R) with Director of Alumni Engagement Kimberly Neher (L) at the award ceremony.

EMPIRE STATE UNIVERSITY LEADERSHIP

FOUNDATION BOARD OF DIRECTORS

Marian Conway '01, '04
Roslyn, NY
Chairwoman

Phillip B. Catchings
Boston, MA

Dora Cervantes '19
Upper Marlboro, MD

John J. Corrou '94
Saratoga Springs, NY

Susan L. Dake
Saratoga Springs, NY

Tina L. Evans '97
New York, NY

Christopher J. Feeley '86
Stratford, CT

David A. Fullard
New York, NY
Secretary

Scott T. Johnson
Saratoga Springs, NY

James G. Karcher '79
Old Field, NY

Althea Luehrsen '02, '10
Buffalo, NY

Julieta Majak
Saratoga Springs, NY
Treasurer

David J. Mazzetti '10
Poughkeepsie, NY

Marly Norris
Saratoga Springs, NY
Executive Director

Ann S. Turner '86
Blaine, MN

Amy J. Vaillancourt '98
Barkhamsted, CT

Lisa Vollendorf
Saratoga Springs, NY
President,
Empire State University

COLLEGE COUNCIL

John Maggiore
Albany, NY
Chairman

Albert T. Culler '21
Bronx, NY

Arlene González-Sánchez
New York, NY

Donna Luh
Depew, NY

Roberta Reardon
Albany, NY

Patricia E. Salkin
Albany, NY

Mark Schroeder '82
Buffalo, NY



28 Union Avenue
Saratoga Springs, NY 12866

Nonprofit Org.
U.S. Postage
PAID
Permit No. 19
Saratoga Springs, NY



**EMPIRE STATE
UNIVERSITY**

**WE ARE GRATEFUL TO YOU FOR
SUPPORTING SUNY EMPIRE IN 2022.**

THANK YOU!

WWW.ESC.EDU/SUPPORTESC